



December 2002

## Piezoelectric Swept Impact seismic source (VIBSIST-SPH54)



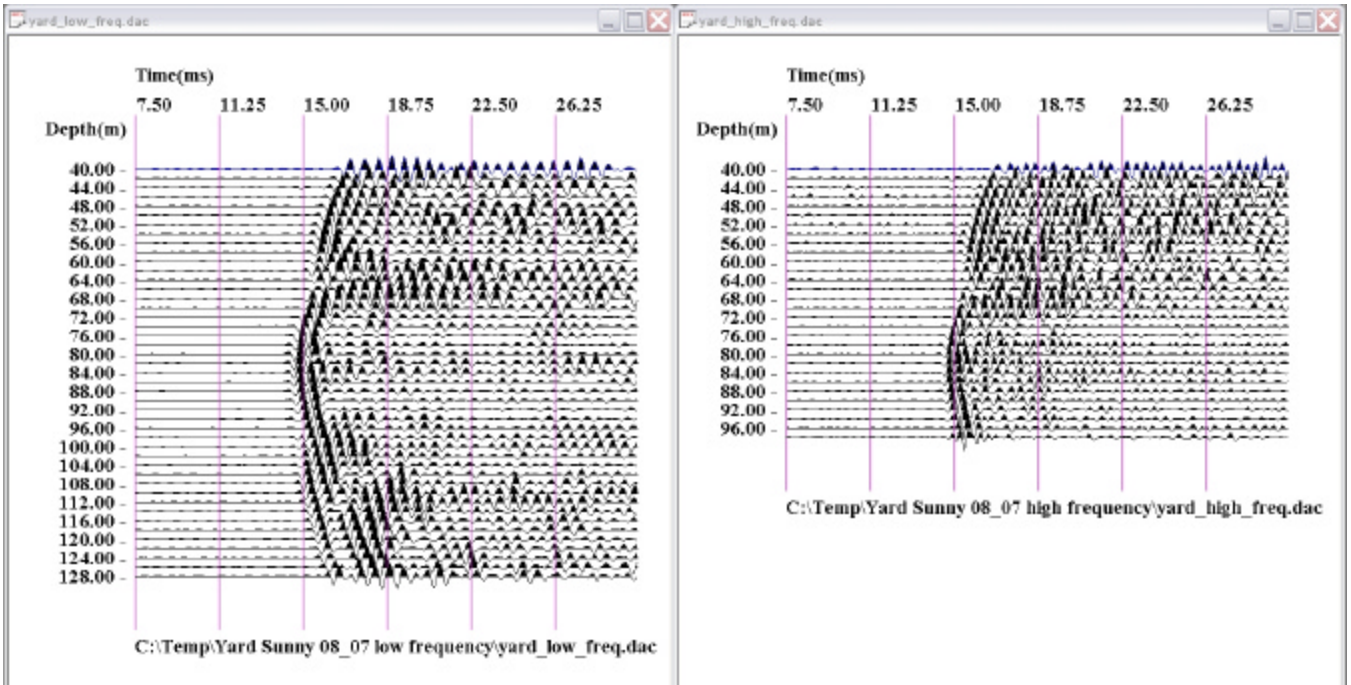
Diameter: 54 mm; Power: 3 J / impact; Low frequency & High frequency water coupled converters.

## Piezoelectric transducers with radial sensitivity (TC-44)



30 units @ 2m intervals; Unit diameter: 44 mm; Frequency range: 10 Hz – 25 kHz.

Example of a source gather (same source position) recorded with the low-frequency converter (left) and the high-frequency converter (right). The boreholes are located near a busy railway exchange close to the Queens end of the Brooklyn bridge in NY. The distance between boreholes was 95 m and the longest ray was 152 m. The acquisition was done in a city noisy environment.



Spectra of the data profiles shown above.

