



# Data Examples and Antenna Comparisons

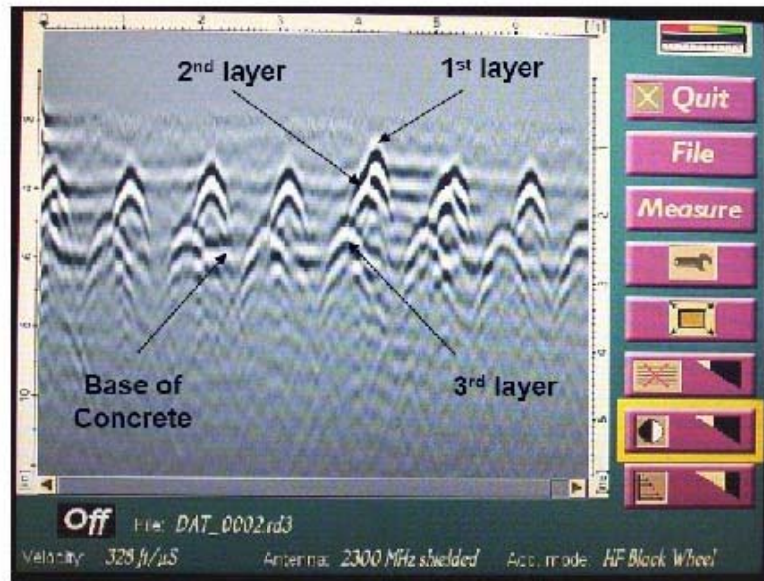
## CX-11 Concrete Imaging System





# Two-Dimensional Example

1<sup>st</sup> and 2<sup>nd</sup>  
layer of  
overlapping  
mesh and 3<sup>rd</sup>  
layer of rebar

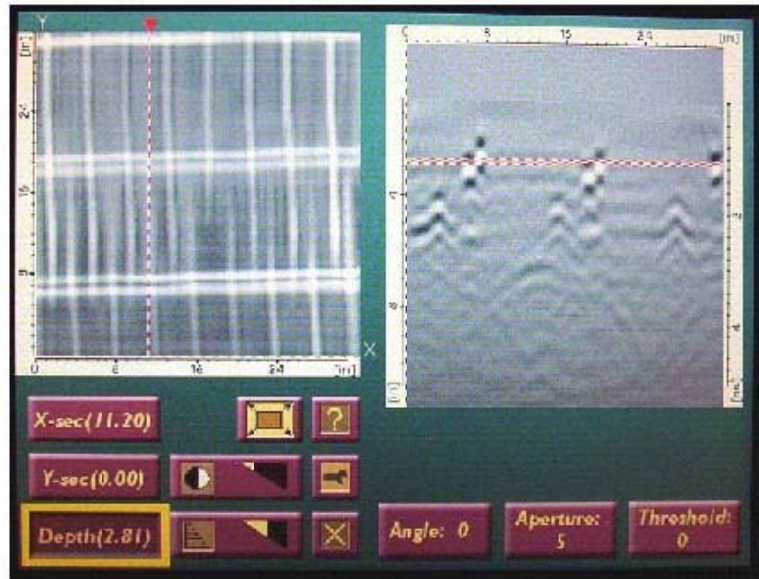




# Three-Dimensional Example

1<sup>st</sup> and 2<sup>nd</sup> Layer  
of Overlapping  
Mesh

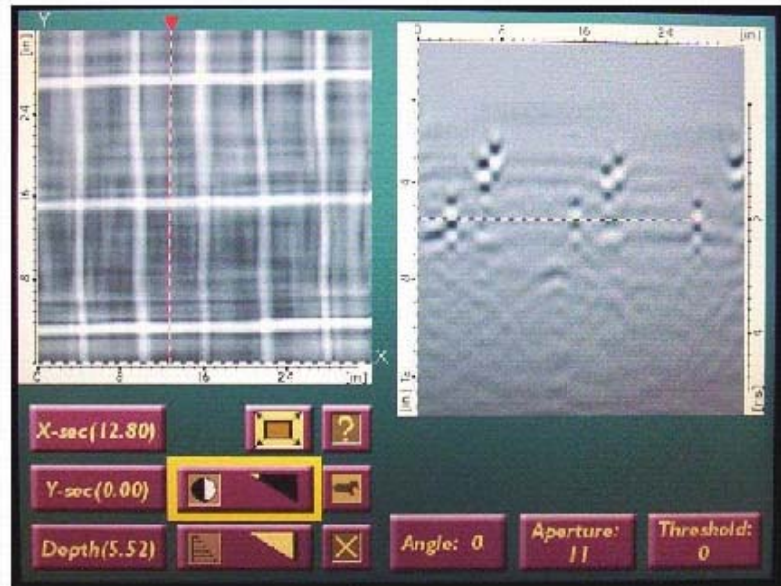
(Migrated Data)



# Three-Dimensional Example

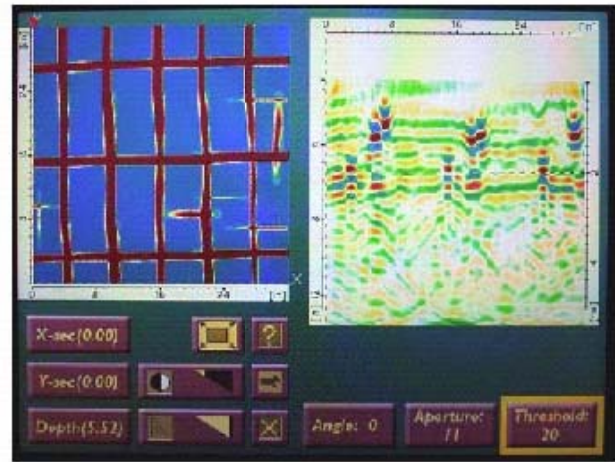
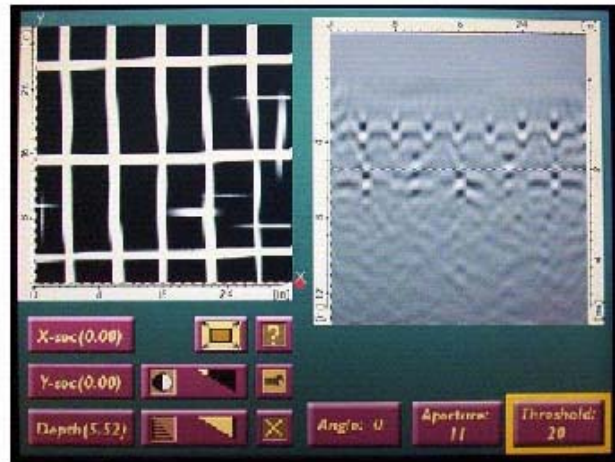
3rd Layer of  
Rebar

(Migrated Data)





# Three-Dimensional Example



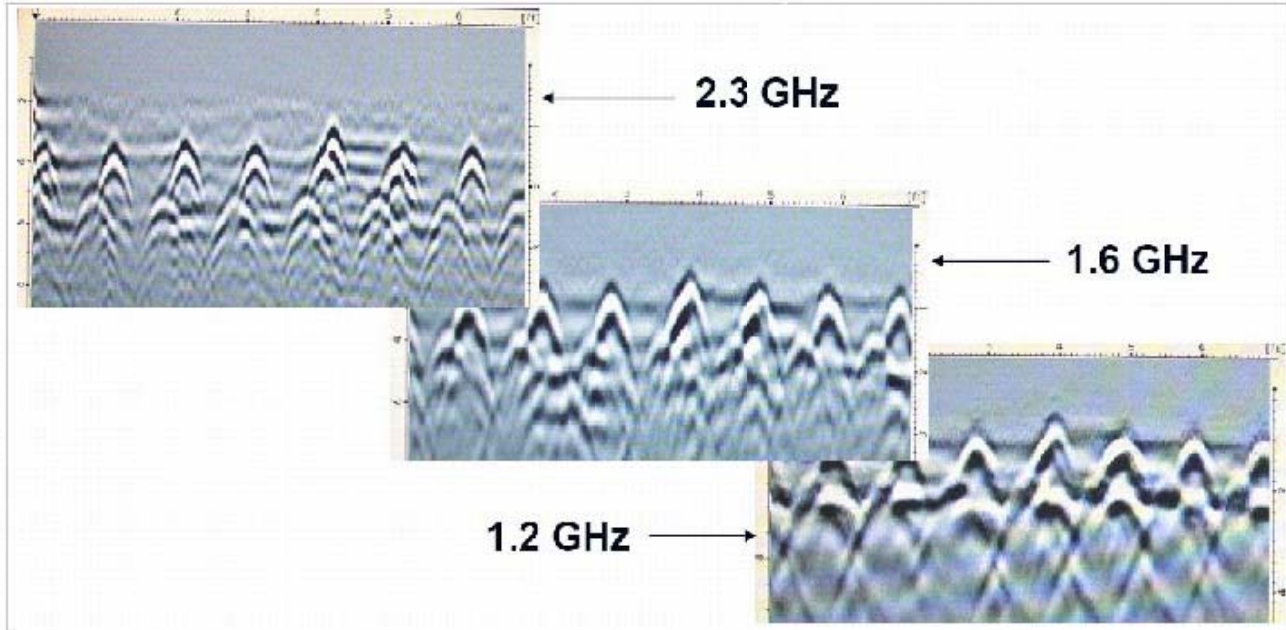
Threshold Examples (3<sup>rd</sup> layer)  
(Migrated Data)



# High Frequency Antenna Comparison

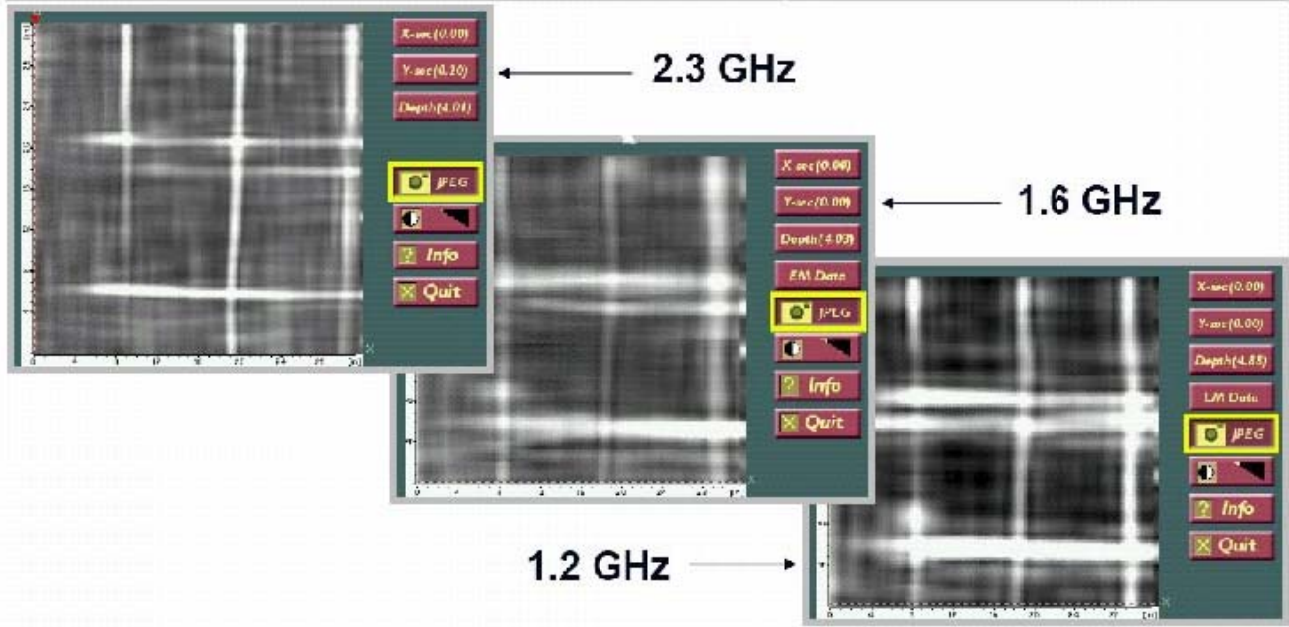


# Two-Dimensional Comparison





## Three-Dimensional Comparison



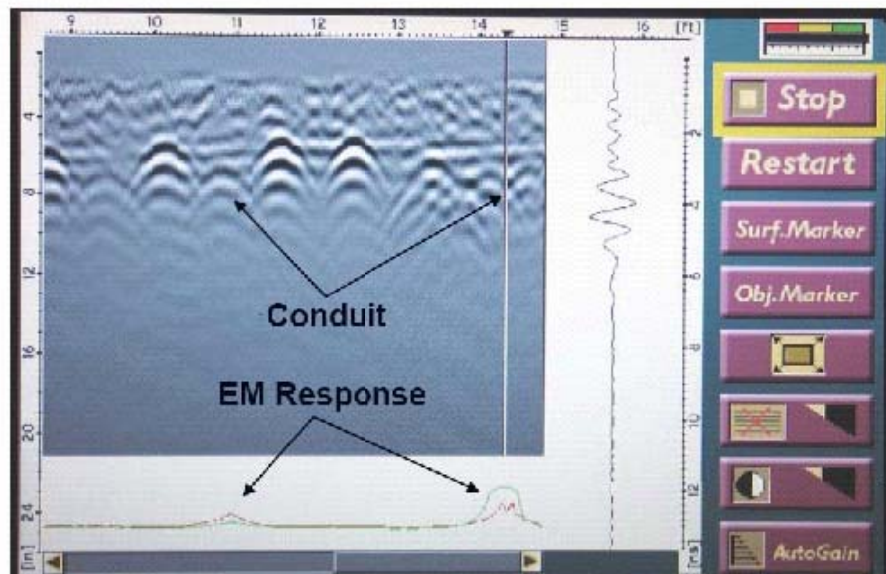


# 2.3 GHz Antenna Examples



## EM Data Examples (2D)

EM data is collected and presented simultaneously as the GPR data and is located at the bottom of the screen.

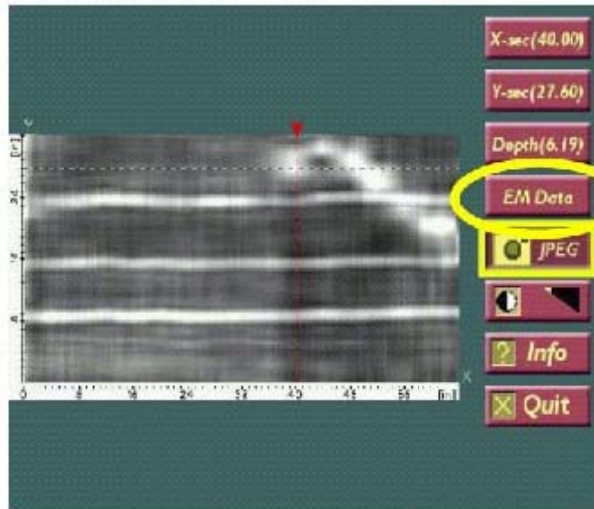


**Note: The GPR and EM datasets are completely independent of each other.**

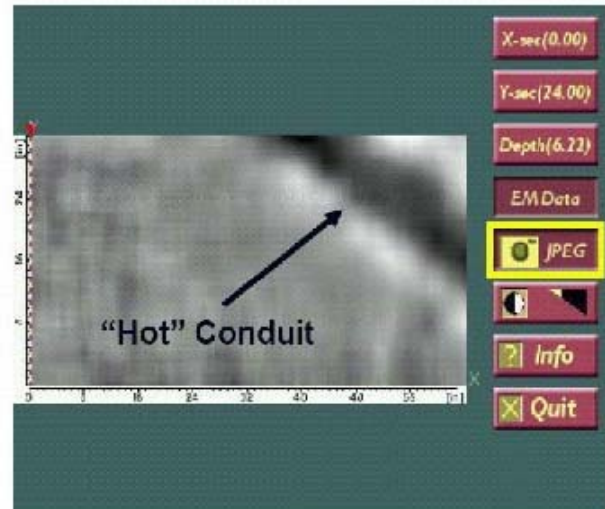


## EM Data Examples (3D)

### Radar Data



### EM data

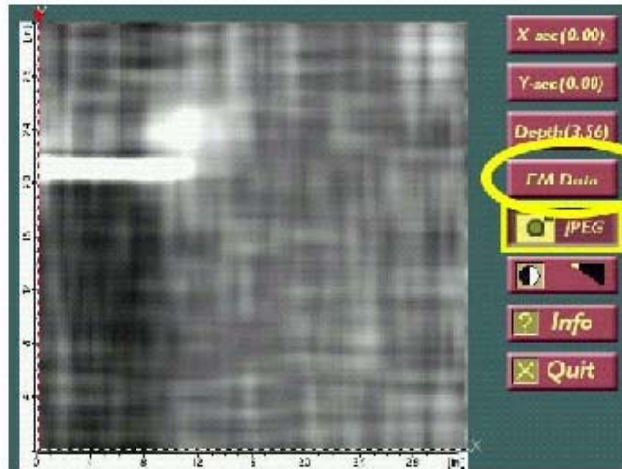


**Note: The GPR and EM datasets are completely independent of each other.**

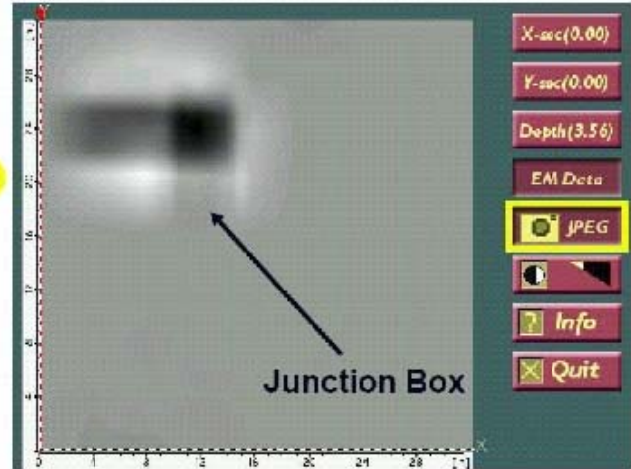


# EM Data Examples (3D)

**Radar Data**



**EM data**

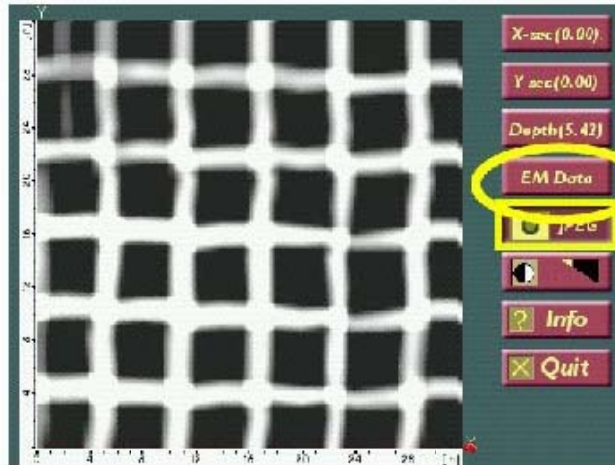


**Note: The GPR and EM datasets are completely independent of each other.**

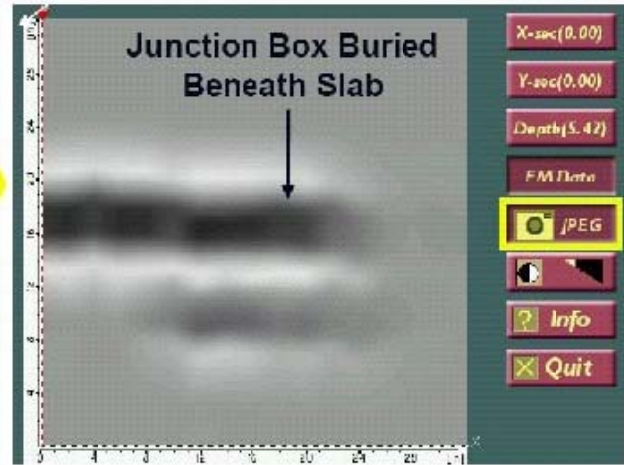


## EM Data Examples (3D)

### Radar Data



### EM data



**Note: The GPR and EM datasets are completely independent of each other.**



# Choosing an Antenna

## - Depth vs. Resolution -

<u>Antenna</u>	<u>Average Maximum Depth of Penetration</u>
2.3 GHZ	10 to 12 inches
1.6 GHZ	16 to 18 inches
1.2 GHZ	22 to 24 inches